

# 26 GA. PERMATILE PANEL LOAD TABLE OVER PLYWOOD

## ADVANCED ALUMINUM

Buildings having a Roof Mean Height  $\leq 20'-0"$ ; Roof Slope:  $2"/12"$  -  $6"/12"$  Gable or Hip Roof  
Wind Speeds 140-180 mph, Exp C, Risk Category II, Enclosed Bldg. based on FLORIDA BUILDING CODE 2010

### 26 GA. PERMATILE PANEL FASTENER SPACING

ZONE	FASTENER	SUBSTRATE	WIND SPEED				
			140	150	160	170	180
			ON CENTER SPACING	ON CENTER SPACING	ON CENTER SPACING	ON CENTER SPACING	ON CENTER SPACING
ZONE 1	#10-15 x 2-1/2"	15/32" PLY	TYPE A 14"	TYPE A 14"	TYPE A 14"	TYPE A 14"	TYPE A 14"
ZONE 2	#10-15 x 2-1/2"	15/32" PLY	TYPE A 14"	TYPE A 14"	TYPE A 14"	TYPE B 14"	TYPE B 14"
ZONE 3	#10-15 x 2-1/2"	15/32" PLY	TYPE A 14"	TYPE B 14"	TYPE B 14"	TYPE B 14"	TYPE B 14"

**PANEL DESCRIPTION:** PERMATILE, 1-1/4" RIB AT 7" O.C., 26 GA., 28" COVERAGE

**PANEL FASTENER:** #10-15 x 2-1/2" HILO WOODGRIP WITH ZAC HEAD AND SEALING WASHER.

**MAXIMUM ALLOWABLE PANEL UPLIFT PRESSURE:** -74.8 PSF @ 14" O.C. FASTENER PATTERN TYPE A, -161.0 PSF @ 14" O.C. FASTENER PATTERN TYPE B, PRESSURE BASED ON UL 580/UL 1897 TESTING REPORT #343-0134T-09A-C.

**PLYWOOD DECKING:** MIN. 15/32" THICK, B-C, 4 PLY. PLYWOOD MUST BE DESIGNED IN ACCORDANCE WITH FBC 2010.

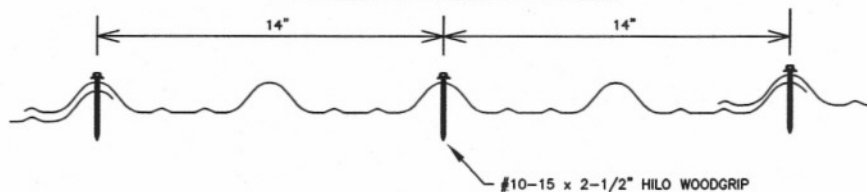
**ROOF SLOPE:** ON ROOF SLOPES LESS THAN 3:12, LAP SEALANT MUST BE USED IN PANEL SIDE LAPS.

**LOAD TABLE** BASED ON WIND PRESSURES CALCULATED PER ASCE 7-10 ( $K_d=0.85$ ) MULTIPLIED BY 0.6 PER FBC 2010, SECTION 1609.1.5.

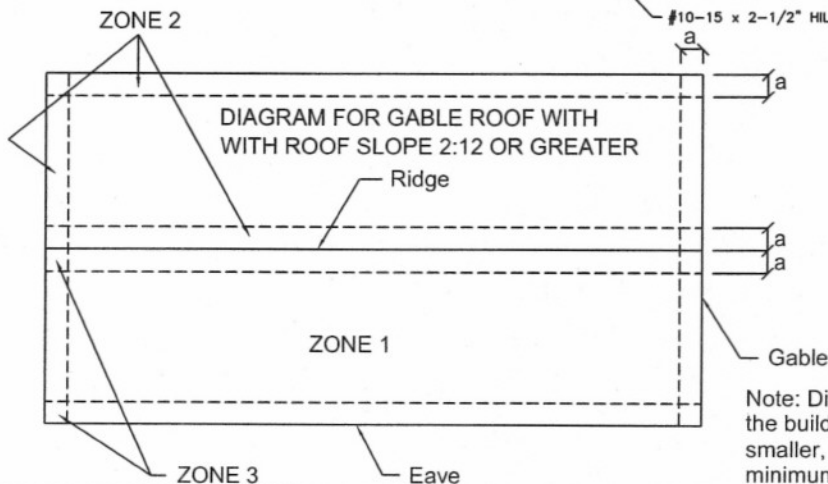
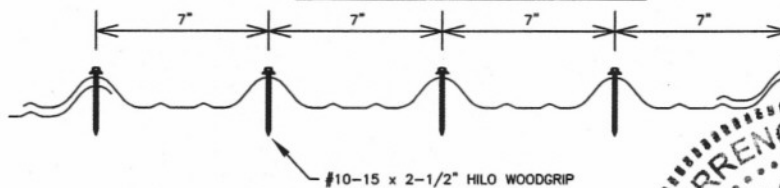
**LOAD TABLE** DOES NOT INCLUDE OVERHANG ZONES

**NOTE:** IF THE BUILDING DOES NOT MEET THE ABOVE PARAMETERS, SITE SPECIFIC ENGINEERING MAY BE USED.

**FASTENER PATTERN TYPE A, AT 14" O.C.**



**FASTENER PATTERN TYPE B, AT 14" O.C.**



DEC 08 2011

Note: Dimension (a) is defined as 10% of the minimum width of the building or 40% of the mean height of the roof, whichever is smaller, however, (a) cannot be less than either 4% of the minimum width of the building or 3 feet.